

Fig.1.

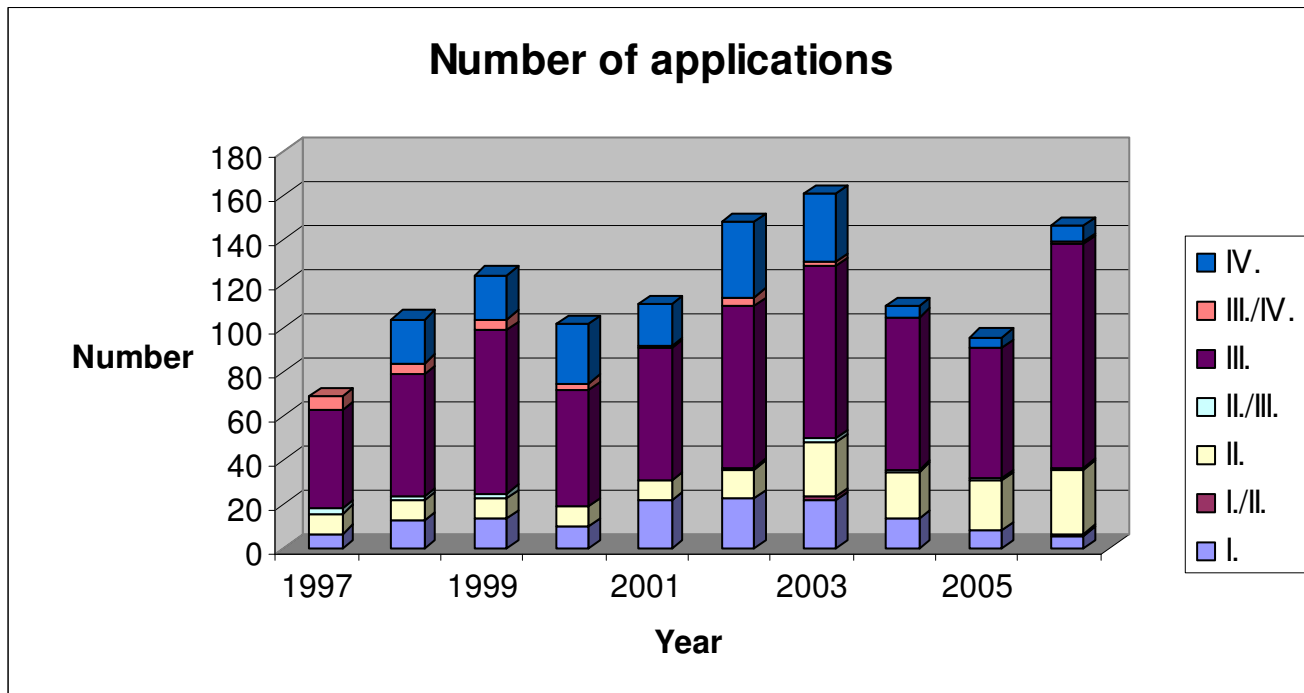
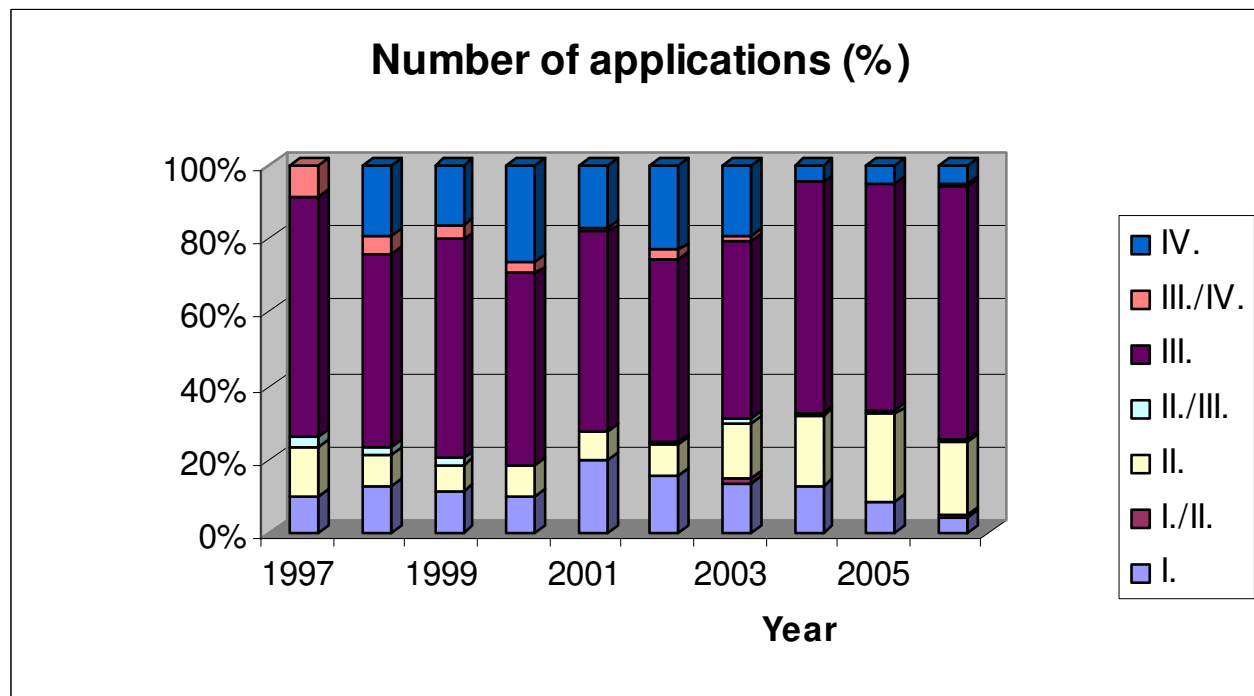


Fig. 2.



Applications in 2006 - disease

| Disease | Number of applications |
|---|------------------------|
| Alzheimer's disease | 2 |
| anaemia | 1 |
| angina pectoris | 2 |
| Arterial occlusion | 1 |
| asthma bronchial | 5 |
| Bioequivalency and pharmacokinetics | 2 |
| Pain including malignant | 4 |
| COPD | 4 |
| Crohn's disease | 1 |
| cystic fibrosis | 1 |
| Depression | 9 |
| diabetes mellitus | 13 |
| dyslipidemy | 4 |
| epilepsy | 1 |
| aesophagitis | 3 |
| haemophilia A | 1 |
| Hepatitis C | 1 |
| homocystinuria | 1 |
| hypertension | 4 |
| Infarction myocardial | 1 |
| Incontinency, overactive blader | 5 |
| carcinoma prostate | 5 |
| Carcinoma colorectal | 3 |
| Carcinoma lung | 8 |
| carcinoma renal | 1 |
| Carcinoma different forms | 5 |
| leukaemia and non-Hodkin's lymphoma | 5 |
| multiple myeloma | 5 |
| insomnia | 1 |
| Osteoarthrose, osteoarthritis | 4 |
| osteoarthritis | 1 |
| Parkinson's disease | 1 |
| Grow disturbances | 2 |
| prevention and treatment of thromboembolisation | 9 |
| pruritus in uraemia | 1 |
| pulmonary fibrosis | 1 |
| rheumatoid arthritis | 4 |
| rhinitis and rhino-conjunctivitis | 4 |
| sclerosis multiplex | 6 |
| schizophrenia | 2 |
| Heart failure | 2 |
| Leg rest syndrome | 1 |
| systemic LE | 1 |
| thrombocytemia | 1 |
| thrombocytopeny | 2 |
| Ulcerative colitis | 3 |
| Vomiting during chemotherapy | 2 |